

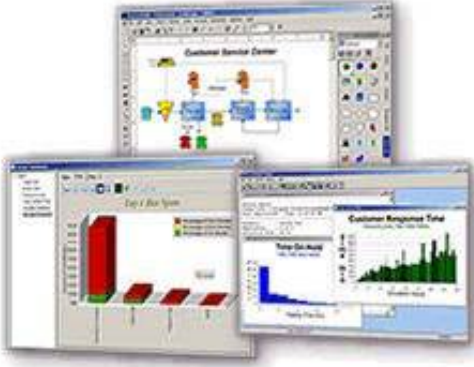


ProcessModel

ProcessModel 5.1 Software

*"An excellent choice for anyone interested in business-process reengineering."
PC World Magazine*

ProcessModel is a comprehensive process improvement package that identifies waste in your processes and shows the best opportunities for improvement, allowing you to change the process and simulate how it will behave with those changes.

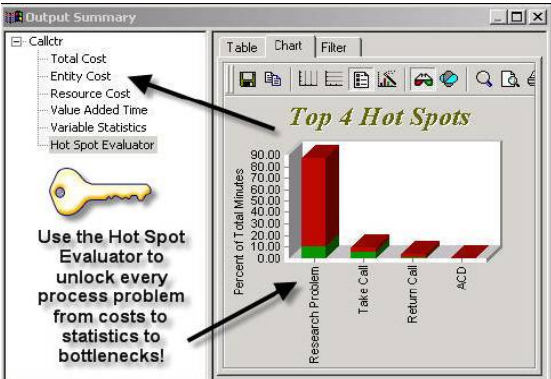


Critical tools include:

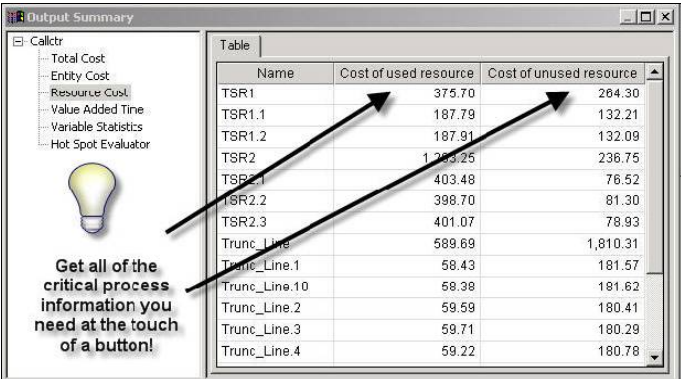
- Comprehensive capture with a "fast process capture methodology."
- Modeling and simulation to replicate current processes and predict future processes.
- Superb animation communicates quickly.
- Optimization hunts for best solutions automatically.
- Output report system identifies and graphs the best opportunities for improvement.
- Root cause analysis links to the process.
- Data analyzer automatically turns raw data into useful data the modeler can use.

Key Features & Benefits

The Hot Spot Evaluator - This is a focused output report that points out the activities that will really make a performance difference and which ones you should leave alone. This one feature alone could save you days of analysis. You can see all the activities, from top to bottom, showing what non-value-adding activities have the most impact to overall system performance.



Use the Hot Spot Evaluator to unlock every process problem from costs to statistics to bottlenecks!



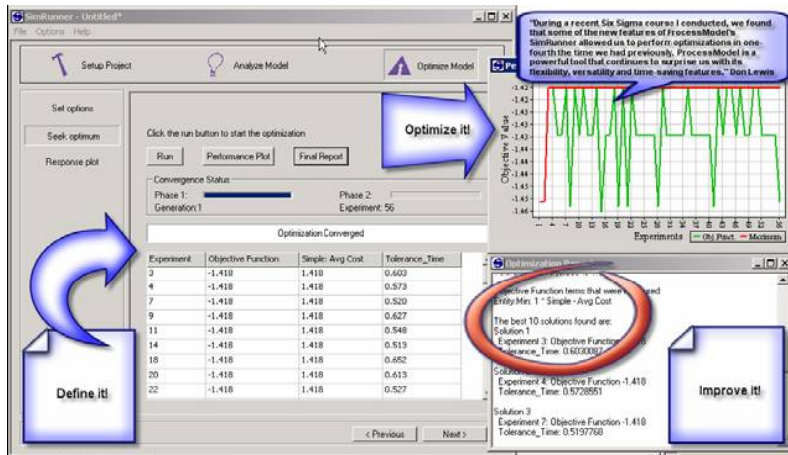
Get all of the critical process information you need at the touch of a button!

Name	Cost of used resource	Cost of unused resource
TSR1	375.70	264.30
TSR1.1	187.79	132.21
TSR1.2	187.91	132.09
TSR2	1,293.25	238.75
TSR2.1	403.48	76.52
TSR2.2	398.70	81.30
TSR2.3	401.07	78.93
Trunc_Line	589.69	1,810.31
Trunc_Line.1	58.43	181.57
Trunc_Line.10	58.38	181.62
Trunc_Line.2	59.59	180.41
Trunc_Line.3	59.71	180.29
Trunc_Line.4	59.22	180.78

Model Objects - This is probably the most exciting addition to ProcessModel software we have made in the past year! In short, Model Objects are sections of models that are extracted from an existing model. As such, they contain all of the logic, activities, variables, etc. needed to run as soon as they are plugged into a model. Imagine being able to use something as small as an on-screen digital clock or as large as a Kanban construct including all of the relevant inputs, components,

operations and characteristics to create numerous models using the same logic without having to replicate effort in the process. 20 Model Objects are available now, included with Version 5.1.

SimRunner 3.0 - You can save days of analysis and find better solutions than you could manually with this one tool alone. SimRunner is designed to optimize model settings to achieve a goal such as: finding the lowest total cost to meet a specific production rate; or what shifts (and quantities of resources) should we use to meet service agreements; or any set of objects you want to meet. The new SimRunner alone has sold for \$3000 with other products. This is a powerful tool that you're going to love.



"Since Nationwide Insurance began working with ProcessModel, Inc, our revenues have increased to \$20.6 billion and we're now 99th on the list of Fortune 500 companies, advancing from 118th, where we were a year ago."

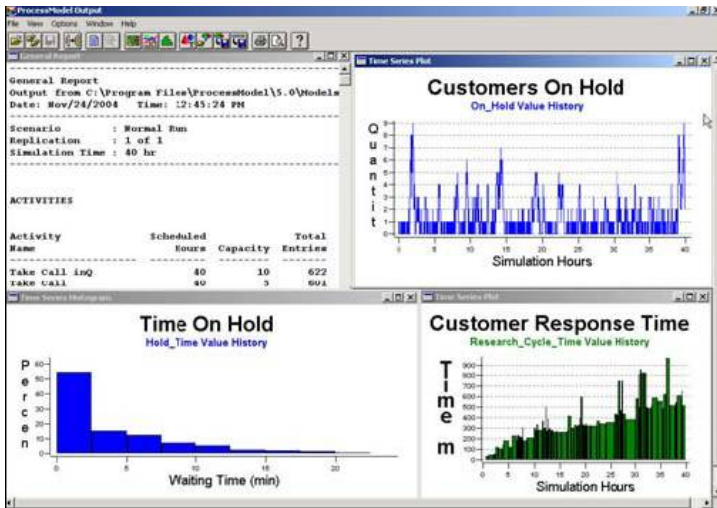
Import/Export to Excel - The Excel interface has been significantly improved to provide more accurate and complete data exchange.

- Scheduled and daily pattern arrival features have been expanded to allow adding and deleting of rows of data in Excel, rather than requiring complete arrival data entry from ProcessModel.
- An Import and Run button has been added to the ProcessModel toolbar to import data and begin a simulation by clicking a single mouse click.
- Spreadsheet formatting to make the data more readable.

The screenshot shows a Microsoft Excel spreadsheet with the following data:

Name	Capacity	Activity Time	Activity Time Unit	Input Queue Capacity	Output Queue Capacity	Batch Qty Before	Batch Qty After	Batch Qty After	Action Logic
Primary_Survey_ABCs	1	min	999	0	None	None	None	None	
Stabilize_Airway_Contr	1	min	999	0	None	None	None	None	Get ER_Nurse
Stabilize_Breathing_Ad	1	min	999	0	None	None	None	None	
Stabilize_Circulation_H	1	min	999	0	None	None	None	None	
NEAR_Exam	1	min	999	0	None	None	None	None	
Vital_Signs	1	min	999	0	None	None	None	None	
Remove_from_Danger	1	min	999	0	None	None	None	None	
Primary_Survey	1	min	999	0	None	None	None	None	GET EMT
Note_Time_of_Injury	1	min	999	0	None	None	None	None	
Clear_Airway	1	min	999	0	None	None	None	None	
Insure_Breathing	1	min	999	0	None	None	None	None	
Insure_Circulation	1	min	999	0	None	None	None	None	
Stop_Hemorrhaging	1	min	999	0	None	None	None	None	
Cervical_Spine	1	min	999	0	None	None	None	None	
Transport	2	min	999	0	None	None	None	None	
Insert_IV	1	min	999	0	None	None	None	None	
Golden_Hour	1	min	999	0	None	None	None	None	
Prioritize_for_Treatment	1	min	999	0	None	None	None	None	
Treat_Patient	1	sec	999	0	None	None	None	None	Get EMT
Asses_Condition	1	min	999	0	None	None	None	None	
Treatment_for_Shock	1	min	999	0	None	None	None	None	
Treatment_for_Hypoxen	1	min	999	0	None	None	None	None	
Communicate_Treatment	1	min	999	0	None	None	None	None	
Asses_Golden_Hour	1	min	999	0	None	None	None	None	
Provide_Treatment	1	min	999	0	None	None	None	None	Get ER_Doctor or ER
Secondary_Assessment	1	min	999	0	None	None	None	None	Get Lab

Model Protection - Protect company proprietary information. Build a model that solves complex problems then hide the underlying methods and logic from prying eyes.



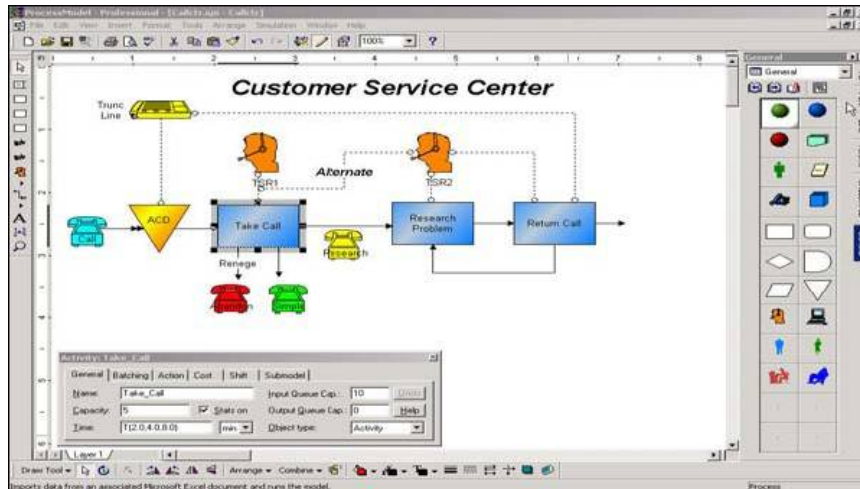
Dialog Entry Lists -

Reduce user entry errors in dialog fields. Pick lists of variables, attributes and scenario parameters lets you quickly build complex models reducing errors.

Sub models - Faster linking of sub models, with less information needed. Error messages pinpoint problems.

MSI Install - We have a smaller, faster, more intelligent product install. The install process is optimized for each operating system, which allows installs to take 75% less time than previous versions.

Easy to Use Flowcharter - The flowcharter is easy to use (click and drag) and is seamlessly integrated to the simulation engine. No coding, scripting or programming required.



Network Models - Model can reside on the network rather than requiring the model to be moved from computer to computer.

Error Checking - Better error checking to eliminate common data entry errors as well as errors that will cause file corruption.

Copy and Paste - Significant work has been done with copy and paste functionality. Duplication rules have been added to modify pasted attribute, variable and scenario parameter names if those names already exist in the model.

Data Synchronization - Attributes, variables, and scenario parameters are synchronized between main models and sub models when opening or closing model files.

Network License Manager - Network license manager to make it more robust and reliable. Great for multi-user applications!

Improved Connection Validation - Routing connections are validated when opening models. This includes more helpful error messages when user tries to create an invalid connection.

For a demonstration, pricing or other information, please contact:

Steelnet Solutions Inc.

www.SteelnetSolutions.com

604-299-2867